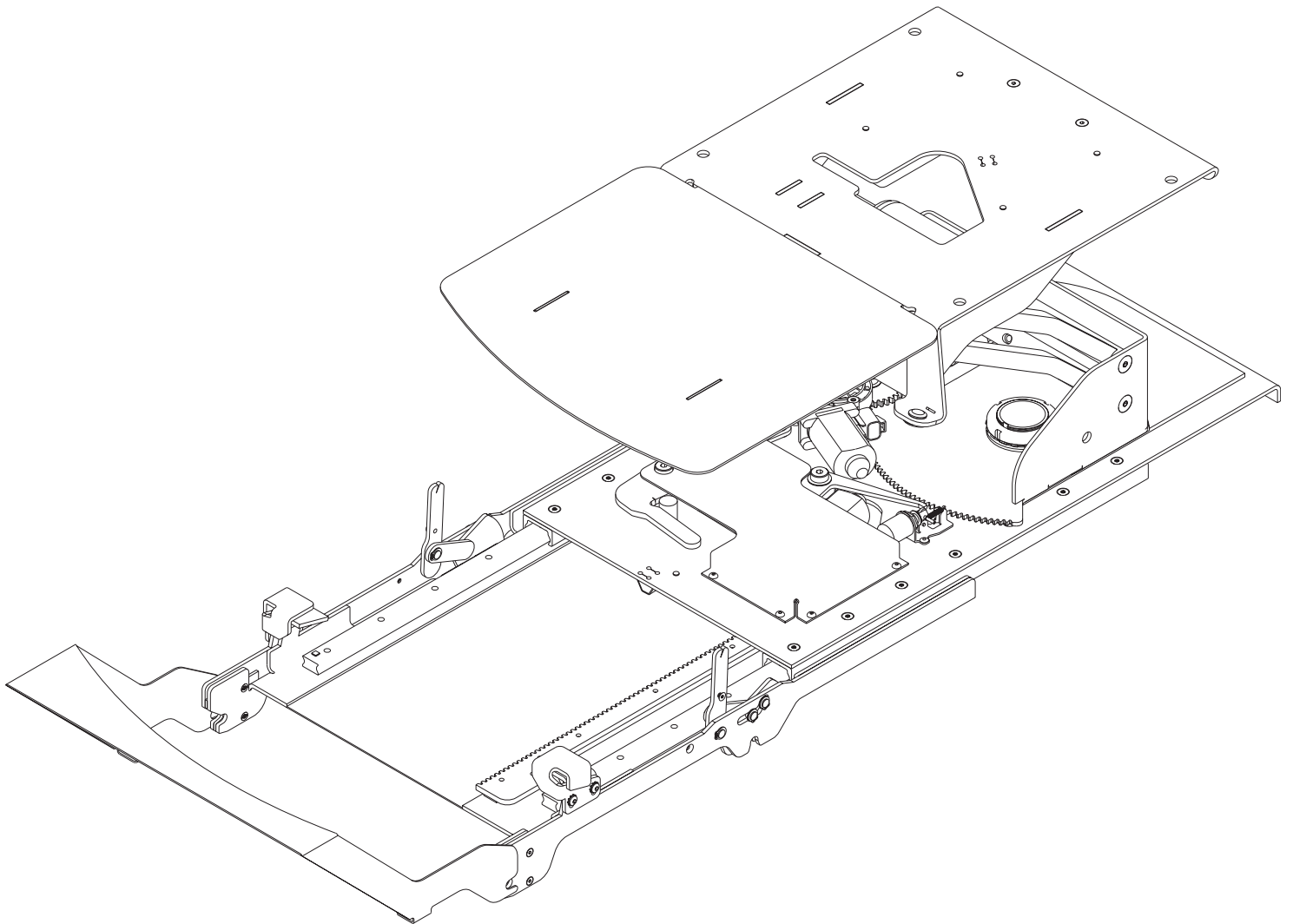




Professionally Driver Fitted

6 WAY TRANSFER SEAT BASE

INSTALLATION/SERVICE MANUAL



SPECIFICATIONS

- Length: 28 5/8"
- Width: 17 3/16"
- Lowered Height: OEM Reference
- Degree of Rotation: 110°
- Horizontal Travel: 18 1/4"
- Vertical Travel: 7 3/8"
- Weight: 125 lbs.
- Lifting Capacity: 500 lbs.

Immediately upon receiving:

Examine the unit for any visible damage. Notify the carrier at once with any claims.

CUSTOMER NAME _____

DEALER NAME _____

INSTALLER'S NAME _____

DATE INSTALLED _____

SERIAL NUMBER _____

MODEL NUMBER _____

Warranty Registration Card	
TO VALIDATE WARRANTY, CARD MUST BE RETURNED TO MOBILITY PRODUCTS & DESIGN WITHIN 10 DAYS	
Titled Vehicle Information	
Make _____	VIN Number _____
Model _____	Serial Number _____
Year _____	
Owner's Information	
Name _____	
Address _____	
City _____	State _____ Zip _____
Telephone _____	
Dealer's Information	
Name _____	
Address _____	
City _____	State _____ Zip _____
Telephone _____	
E-mail _____	
Did you receive your owner's Manual? YES NO	
Owner's Signature _____	
Dealer's Signature _____	Installation Date _____
Ease of Installation	
<input type="radio"/> Easy	
<input type="radio"/> Moderately Easy	
<input type="radio"/> Moderately Difficult	
<input type="radio"/> Difficult	
Installer Signature	
I _____ of _____	
certify that all items have been completed and checked. Customer has been given complete instruction on how to operate transfer seat.	



WARNING: FOR THE SAFETY OF THE USER/OPERATOR, POSITIVE SECUREMENT AND PROPER OPERATION-MAKE ABSOLUTELY CERTAIN ALL MOUNTING HARDWARE IS INSTALLED AS DESCRIBED IN THE INSTALLATION INSTRUCTIONS, (QUANTITIES AND PROCEDURES), AND PAY CLOSE ATTENTION TO ALL SAFETY PRECAUTIONS AND WARNINGS LISTED THROUGHOUT THE INSTRUCTIONS. FAILURE TO DO SO MAY RESULT IN PROPERTY DAMAGE AND/OR SERIOUS BODILY INJURY.

TABLE OF CONTENTS

	PAGE
INSTALLATION INSTRUCTIONS	1
IN CASE OF POWER FAILURE	1
PARTS LIST AND ILLUSTRATION (2007 BRAUN CHRYSLER/DODGE)	2A-2C
PARTS LIST AND ILLUSTRATION (2008 BRAUN CHRYSLER/DODGE)	2D-2F
PARTS LIST AND ILLUSTRATION (2008 BRAUN TOYOTA SIENNA)	3A-3C
SHIPMENT INFORMATION / POWER SEAT FUNCTIONS	4
TRANSFERRING TO AND FROM A WHEELCHAIR	5
MAINTENANCE AND TROUBLESHOOTING	5-6
MOBILITY PRODUCTS & DESIGN WARRANTY POLICY	7

RECOMMENDED TOOL LIST

SPANNER WRENCH (included w/seat)	ALLEN WRENCHES
OPEN END WRENCHES	SIDE CUTTERS
SOCKET SET	SCREW DRIVERS

FOR ASSISTANCE, ADDITIONAL MANUALS OR PARTS

Call: (800) 488-7688

Fax: (888) 485-2499

E-Mail: sales@mobilityproductsdesign.com

Website: www.mobilityproductsdesign.com

INSTALLATION INSTRUCTIONS

Please check the box to see that you have everything needed to install the transfer seat base.

Item	Description	Quantity	Part No.
1	Transfer Seat Base (Vehicle & Year Specific)	1	78****A
2	Main Assembly Assembly (Color & Year Specific)	1	782****
3	Hand Control Assembly (Color & Year Specific)	1	782**A
4	Spanner Wrench Tool	1	78227SWT
5	Power Pigtail Harness	1	78186A
6	Transfer Seat Base Manual	1	78269A

MECHANICAL INSTALLATION

To install the transfer seat base, refer to the following sections and perform the procedures carefully and in the order they are presented. Be certain that the installation instructions are followed exactly and do not eliminate any steps or modify the product. If any questions arise that are not covered in this section, contact Mobility Products & Design Customer Service for assistance at (800) 485-2499 Extension 6011.

VEHICLE PREPARATION

Safely park vehicle on a flat, level surface and turn engine off.

Remove the seat and chassis builders seat base from vehicle.

Remove seat from the chassis builders seat base, keep the nuts bolts and washers.

Clear vehicle floor of all loose material and debris, high-plush carpet strands, etc. that may interfere with installation and operation of the transfer seat base.

NOTE: Instructions applicable to driver side only.

1. Carefully remove the existing seat base, (pedestal).
2. Remove the seat from the pedestal and use the existing seat mounting hardware to secure the seat base plate.
3. Put New Transfer Seat Base in. Line up with strikers and push down on base to lock in strikers with handles on each side of the base. Put allen screws in handles for locking the seat base.
4. Run wiring harness to positive and ground fuse link, and plug into base, secure wire to floor.
5. Plug into power pigtail harness in vehicle, plug in switch controls.
6. Run base up/down, forward/reverse and left to right. Put main plastic shroud on (velcro supplied).
7. Mount OEM seat to Transfer Seat Base using original bolts, nuts and washers. Tighten hardware securely.
8. Mount switch controls to seat.
9. Mount foot rest support in place. Screw down using (2) self tapping screws, supplied. Then slip plastic foot rest over foot rest support using velcro on top and sides (velcro supplied).

IN CASE OF POWER FAILURE

In case of power failure disengage the Drive Swivel Slide Assembly (P/N 78143A page 2C 2F or 3C). Doing so will allow you to swivel in and out and forward and back. You will not be able to move the seat up or down.

REPLACEMENT PARTS LIST FOR 2007 CHRYSLER

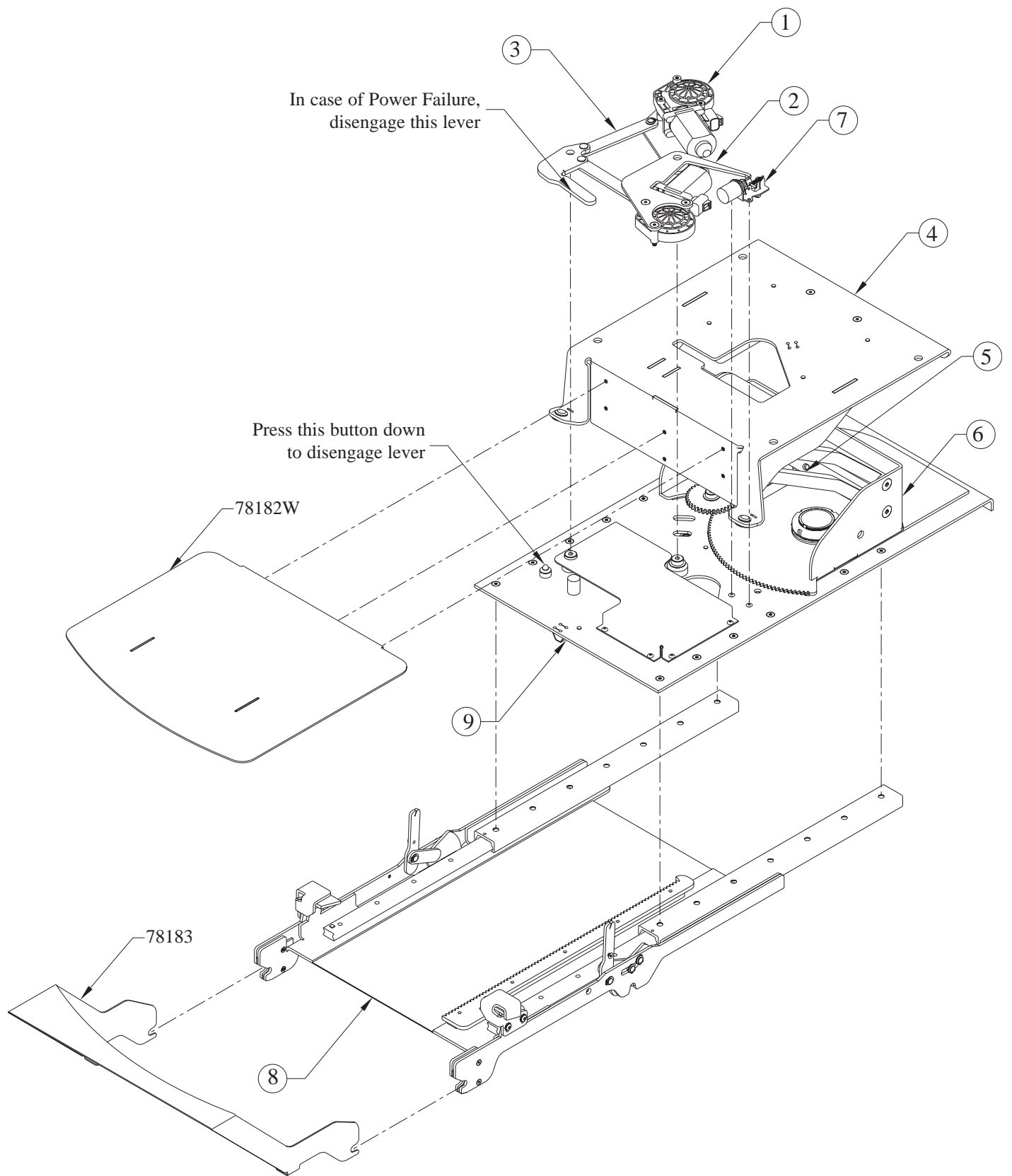
REF NO.	PART NO.	QTY.	DESCRIPTION	REF NO.	PART NO.	QTY.	DESCRIPTION
1	78114DW	1	Handle Striker Lock Wmt - Driver	59	78221	1	1/8" x 1" Roll Pin
2	78115PW	1	Handle Striker Lock Wmt - Passenger	60	78222	1	3/16" x 1" Extension Spring
3	78118W	2	Link Striker Lock Weldment	61	78223	1	1/8" Rivet Stainless Steel
4	78119	1	Gear Rack Spacer	62	78224A	1	Pull Solenoid Assembly
5	78120	1	Gear Rack	63	78225	1	3" x 2.2" x 1/8" Thrust Bearing
6	78133W	1	Motor Mount Swivel Weldment	64	78226	1	2.157" Washer
7	78134	3	Motor Mount Spacer	65	78227	1	2.157-18 Nut
8	78138W	1	Motor Mount Side Weldment	66	78227SWT	1	Spanner Wrench Tool
9	78140	2	Link Motor Mount Handle	67	78228	1	3:1 Reduction Gear Assembly
10	78141	1	Swivel/Slide disengage Handle	68	78229	1	Spring Plunger
11	78142	2	Handle Pin	69	78230	2	0.515 x 1" Belleville Spring Washer
12	78147W	1	Riser Top Weldment '07 Chrysler	70	78231	2	1/2" x 3/4" x 3/8-16 Shoulder Bolt
13	78148	1	UHMW Down Bumper	71	78232	1	1/2" x 7/8" x 3/8-16 Shoulder Bolt
14	78149	1	Harness Shield	72	78233	3	3/8-16 Nut - Auto Black
15	78150	2	UHMW Flat Black Bearing	73	78234	9	3/16" Pop Rivet - Auto Black
16	78154W	2	Lift Arm Weldment	74	78235	1	1/2" Snap Ring - Auto Black
17	78159W	1	Bottom Plate/Swivel Gear Weldment	75	78236	1	.516" x .75" x .025 Washer - Black
18	78160	4	Lift Arm Pivot Shaft	76	78237	14	M6 x 1.0 x 0.8 mm FHSCS G 10.9
19	78161A	1	Lift Assembly/Relay Harness	77	78238	14	M8 x 1.25 x 1.6 mm FHSCS G 10.9
20	78163	1	Stop Solenoid Pin	78	*78242MS	1	Foot Rest Plastic - Med. Slate '07
21	78164	1	Stop Pin/Solenoid Link		*78248GS	1	Foot Rest Plastic - Gray Stone '07
22	78165	1	Stop Pin Solenoid Bracket	79	*78243MS	1	Main Ass'y Plastic - Med. Slate '07
23	78166	1	Stop Pin Link Stop		*78249GS	1	Main Ass'y Plastic - Gray Stone '07
24	78168	1	UHMW Swivel Bearing	80	*78244MS	1	Hand Switch Plastic-Med. Slate '07
25	78169	1	Main Swivel Pivot		*78250GS	1	Hand Switch Plastic-Gray Stone '07
26	78170	1	Motor Slide/Swivel Cover	81	78245	4	Black Plastic Snap Rivets
27	78171	1	Slide Carriage Harness Shield	82	78246	1	1" x 40" Velcro Hook - Rough Side
28	78172	2	Slide Carriage Roller	83	78247	1	1" x 40" Velcro Hook - Soft Side
29	78173	1	Roller Shaft Pin	84	78266	2	Wiring Harness Relay
30	78174	1	3:1 Gear Reduction Spacer	85	78271	4	1/4-28 x 1/2" BHCS Bolt
31	78175	1	Motor Mount Spacer	86	78272	1	1/2" x 2 1/4" Clevis Pin
32	78176	1	Handle Spacer	87	78273	1	1/2" x 2 3/4" Clevis Pin
33	78177A	1	Main Power Harness	88	78275	14	7" Black Cable Ties
34	78178A	1	Driver Seat w/Memory Harness '07	89	78276	1	5/8" Insulated Wire Clamp
35	78182W	1	Foot Rest Weldment '07 Chrysler	90	78306W	1	Chrysler Pan Weldment '07 & '08
36	78183	1	Foot Rest Pan '07 Chrysler	91	78308DW	1	Striker Hook Weldment - Driver
37	78184	2	Linear Slide Bearing Rail	92	78309PW	1	Striker Hook Weldment - Passenger
38	78186A	1	Pigtail Wiring Harness	93	78312W	1	Slide Carriage Weldment
39	78187A	1	Lift Arm & Relay Block Harness	94	78316W	1	Anti-Rattle Stop - Driver Side
40	78200	4	Washer - .376 x .563 18-8 Stainless	95	78317W	1	Anti-Rattle Stop - Passenger Side
41	78201	14	1/2" Snap Ring - Auto Black	96	80003-000	3	1/4-20 x 1/2" HCS Bolt
42	78202	6	1/4-20 x 3/4" FHCS 18-8 Stainless	97	82034-000	4	1/4" External Tooth Lock Washer
43	78203	2	Anti Rattle/Front Seat	98	88017-000	3	Screw-#8-18 x 3/4" Phillips Pan Head
44	78204	4	#10-32 x 1/2" FHDXS	99	92063-000	1	Decal - Warning This Vehicle Kit
45	78205	4	#10-32 x 0.20 Cable Retainer Nut				
46	78206	2	#10-32 x 3/8" FL HD-HX SKT Screw				
47	78207	1	Left Siemens Motor - Tapped				
48	78208	6	1/4-20 x 1 1/2" FHSCS				
49	78209	1	Right Siemens Motor - Tapped				
50	78210	2	1/4-20 x 3/4" FHSCS				
51	78211	8	Pop Rivet 3/16" Auto Black				
52	78212	8	1/2" x 1/2" Flange Bearing				
53	78213	1	1,000 lbs. Actuator				
54	78214	8	3/8-16 x 1" FHSCS Black				
55	78215	2	#10-32 w/lock washer Nut				
56	78216	7	#10-32 x 3/8" BHSCS Black				
57	78217	2	1/2" Rue Ring				
58	78220	1	1/8" x 7/16" Roll Pin				

*NOTE: Medium Slate = Gray
Gray Stone = Tan

2007 CHRYSLER TRANSFER SEAT BASE ASSEMBLIES LIST

(Refer to parts list on page 2A and illustration on page 2C)

REF NO.	ASSEMBLY NO.	DESCRIPTION	QTY.
1	78135A	Motor Mount Swivel Assembly includes (1) Ref. No. 6, (3) Ref. No. 7, (1) Ref. No. 47 & (3) Ref. No. 48	1
2	78139A	Motor Mount Slide Assembly includes (1) Ref. No. 8, (3) Ref. No. 48 & (1) Ref. No. 49	1
3	78143A	Drive Swivel Slide Assembly includes (1) P/N 78135A, (1) P/N 78139A, (2) Ref. No. 9, (1) Ref. No. 10, (2) Ref. No. 11 & (4) Ref. No. 41	1
4	78151A	Chrysler Top Plate Assembly '07 & '08 includes (1) Ref. No. 12, (1) Ref. No. 13, (1) Ref. No. 14, (2) Ref. No. 15, (1) Ref. No. 19 (2) Ref. No. 50, (4) Ref. No. 51, (2) Ref. No. 55, (2) Ref. No. 56 & (2) Ref. No. 84	1
5	78155A	Lift Arm Assembly includes (1) Ref. No. 16 (4) Ref. No. 18 & (4) Ref. No. 52	2
6	78162A	Chrysler Lift Assembly '07 & '08 includes (1) P/N 78151A, (2) P/N 78155A, (1) Ref. No. 17, (1) Ref. No. 53, (8) Ref. No. 54, (2) Ref. No. 57, (1) Ref. No. 86 & (1) Ref. No. 87	1
7	78167A	Stop Pin/Solenoid Assembly Includes (1) Ref. No. 20, (1) Ref. No. 21 (1) Ref. No. 22, (1) Ref. No. 23, (1) Ref. No. 58, (1) Ref. No. 59, (1) Ref. No. 60, (1) Ref. No. 61 & (1) Ref. No. 62	1
	78244A/78250A	Hand Switch Assembly Medium Slate (Gray) / Gray Stone (Tan) '07 includes (1) Ref. No. 39, (1) Ref. No. 80 & (4) Ref. No. 81	1
8	78310A	Chrysler Pan Assembly '07 & '08 includes (1) Ref. No. 1, (1) Ref. No. 2, (2) Ref. No.3, (1) Ref. No. 4, (1) Ref. No. 5, (2) Ref. No. 37, (4) Ref. No. 40, (8) Ref. No. 41, (6) Ref. No. 42, (2) Ref. No. 43, (4) Ref. No. 44, (4) Ref. No. 45, (2) Ref. No. 46, (14) Ref. No. 77, (14) Ref. No. 88,(1) Ref. No. 90, (1) Ref. No. 91 & (1) Ref. No. 92	1
9	78313A	Chrysler Slide Carriage Assembly '07 Includes (1) P/N 78143A, (1) P/N 78162A, (1) P/N 78167A, (1) Ref. No. 24, (1) Ref. No. 25, (1) Ref. No. 26, (1) Ref. No. 27, (2) Ref. No. 28, (1) Ref. No. 29, (1) Ref. No. 30, (1) Ref. No. 31, (1) Ref. No. 32, (1) Ref. No. 33, (1) Ref. No. 34, (2) Ref. No. 41, (4) Ref. No. 51, (5) Ref. No. 56, (1) Ref. No. 63, (1) Ref. No. 64, (1) Ref. No. 65, (1) Ref. No. 67, (1) Ref. No. 68, (2) Ref. No. 69, (2) Ref. No. 70, (1) Ref. No. 71, (3) Ref. No. 72, (9) Ref. No. 73, (1) Ref. No. 74, (1) Ref. No. 75 & (1) Ref. No. 93	1
	78185A	Chrysler Complete Transfer Seat Base Assembly '07 Includes (1) P/N 78310A, (1) P/N 78313A, (1) Ref. No. 35, (1) Ref. No. 36, (1) Ref. No. 38, (1) Ref. No. 66, (14) Ref. No. 76, (1) Ref. No. 78, (1) Ref. No. 79, (1) Ref. No. 82, (1) Ref. No. 83, (4) Ref. No. 85, (1) Ref. No. 89, (1) Ref. No. 94, (1) Ref. No. 95, (3) Ref. No. 96, (4) Ref. No. 97, (3) Ref. No. 98 & (1) Ref. No. 99	1



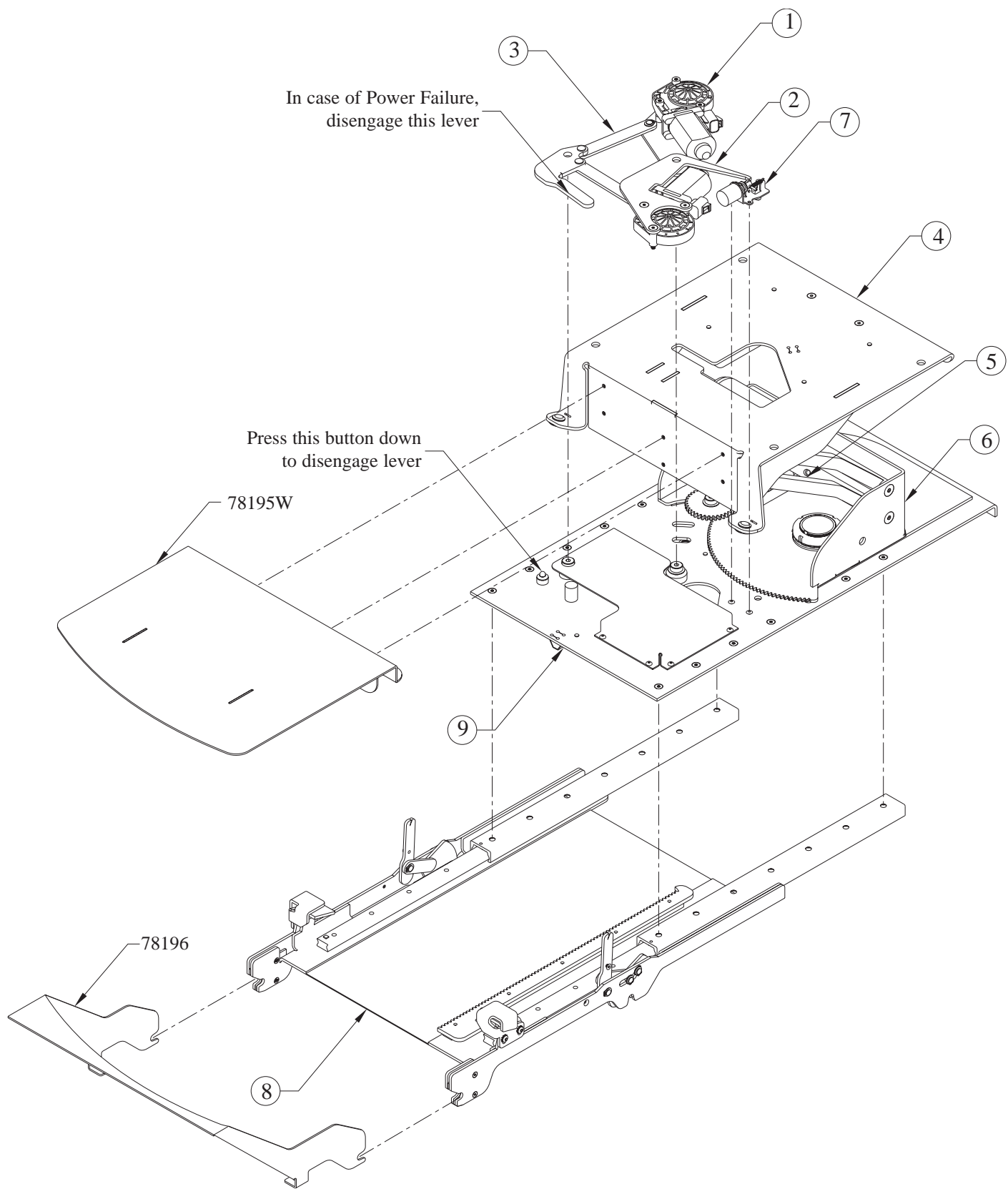
REPLACEMENT PARTS LIST FOR 2008 CHRYSLER

REF NO.	PART NO.	QTY.	DESCRIPTION	REF NO.	PART NO.	QTY.	DESCRIPTION
1	78114DW	1	Handle Striker Lock Wmt - Driver	59	78222	1	3/16" x 1" Extension Spring
2	78115PW	1	Handle Striker Lock Wmt - Passenger	60	78223	1	1/8" Rivet Stainless Steel
3	78118W	2	Link Striker Lock Weldment	61	78224A	1	Pull Solenoid Assembly
4	78119	1	Gear Rack Spacer	62	78225	1	3" x 2.2" x 1/8" Thrust Bearing
5	78120	1	Gear Rack	63	78226	1	2.157" Washer
6	78133W	1	Motor Mount Swivel Weldment	64	78227	1	2.157-18 Nut
7	78134	3	Motor Mount Spacer	65	78227SWT	1	Spanner Wrench Tool
8	78138W	1	Motor Mount Side Weldment	66	78228	1	3:1 Reduction Gear Assembly
9	78140	2	Link Motor Mount Handle	67	78229	1	Spring Plunger
10	78141	1	Swivel/Slide disengage Handle	68	78230	2	0.515 x 1" Belleville Spring Washer
11	78142	2	Handle Pin	69	78231	2	1/2" x 3/4" x 3/8-16 Shoulder Bolt
12	78147W	1	Riser Top Weldment '06 Chrysler	70	78232	1	1/2" x 7/8" x 3/8-16 Shoulder Bolt
13	78148	1	UHMW Down Bumper	71	78233	3	3/8-16 Nut - Auto Black
14	78149	1	Harness Shield	72	78234	9	3/16" Pop Rivet - Auto Black
15	78150	2	UHMW Flat Black Bearing	73	78235	1	1/2" Snap Ring - Auto Black
16	78154W	2	Lift Arm Weldment	74	78236	1	.516" x .75" x .025 Washer - Black
17	78159W	1	Bottom Plate/Swivel Gear Weldment	75	78237	14	M6 x 1.0 x 0.8 mm FHSCS G 10.9
18	78160	4	Lift Arm Pivot Shaft	76	78238	14	M8 x 1.25 x 1.6 mm FHSCS G 10.9
19	78161A	1	Lift Assembly/Relay Harness	77	*78257MS	1	Foot Rest Plastic - Med. Slate '08
20	78163	1	Stop Solenoid Pin		*78260DS	1	Foot Rest Plastic - Dark Slate '08
21	78164	1	Stop Pin/Solenoid Link		*78263PB	1	Foot Rest Plastic - Pebble '08
22	78165	1	Stop Pin Solenoid Bracket	78	*78258MS	1	Main Ass'y Plastic - Med. Slate '08
23	78166	1	Stop Pin Link Stop		*78261DS	1	Main Ass'y Plastic - Dark Slate '08
24	78168	1	UHMW Swivel Bearing		*78264PB	1	Main Ass'y Plastic - Pebble '08
25	78169	1	Main Swivel Pivot	79	*78259MS	1	Hand Switch Plastic-Med. Slate '08
26	78170	1	Motor Slide/Swivel Cover		*78262DS	1	Hand Switch Plastic-Dark Slate '08
27	78171	1	Slide Carriage Harness Shield		*78265PB	1	Hand Switch Plastic - Pebble '08
28	78172	2	Slide Carriage Roller	80	78245	4	Black Plastic Snap Rivets
29	78173	1	Roller Shaft Pin	81	78246	1	1" x 40" Velcro Hook - Rough Side
30	78174	1	3:1 Gear Reduction Spacer	82	78247	1	1" x 40" Velcro Hook - Soft Side
31	78175	1	Motor Mount Spacer	83	78266	2	Wiring Harness Relay
32	78176	1	Handle Spacer	84	78271	4	1/4-28 x 1/2" BHCS Bolt
33	78177A	1	Main Power Harness	85	78272	1	1/2" x 2 1/4" Clevis Pin
34	78184	2	Linear Slide Bearing Rail	86	78273	1	1/2" x 2 3/4" Clevis Pin
35	78186A	1	Pigtail Wiring Harness	87	78275	14	7" Black Cable Ties
36	78187A	1	Lift Arm & Relay Block Harness	88	78276	1	5/8" Insulated Wire Clamp
37	78195W	1	Foot Rest Weldment '08 Chrysler	89	78306W	1	Chrysler Pan Weldment '07 & '08
38	78196	1	Foot Rest Pan '08 Chrysler	90	78308DW	1	Striker Hook Weldment - Driver
39	78200	4	Washer - .376 x .563 18-8 Stainless	91	78309PW	1	Striker Hook Weldment - Passenger
40	78201	14	1/2" Snap Ring - Auto Black	92	78312W	1	Slide Carriage Weldment
41	78202	6	1/4-20 x 3/4" FHCS 18-8 Stainless	93	78314A	1	Driver Seat w/Memory Harness '08
42	78203	2	Anti Rattle/Front Seat	94	78316W	1	Anti-Rattle Stop - Driver Side
43	78204	4	#10-32 x 1/2" FHDXS	95	78317W	1	Anti-Rattle Stop - Passenger Side
44	78205	4	#10-32 x 0.20 Cable Retainer Nut	96	80003-000	3	1/4-20 x 1/2" HCS Bolt
45	78206	2	#10-32 x 3/8" FL HD-HX SKT Screw	97	82034-000	4	1/4" External Tooth Lock Washer
46	78207	1	Left Siemans Motor - Tapped	98	88017-000	3	Screw-#8-18 x 3/4" Phillips Pan Head
47	78208	6	1/4-20 x 1 1/2" FHSCS	99	92063-000	1	Decal - Warning This Vehicle Kit
48	78209	1	Right Siemans Motor - Tapped				
49	78210	2	1/4-20 x 3/4" FHSCS				*NOTE: Medium Slate = Gray
50	78211	8	Pop Rivet 3/16" Auto Black				Pebble = Tan
51	78212	8	1/2" x 1/2" Flange Bearing				Dark Slate = Almost Black
52	78213	1	1,000 lbs. Actuator				
53	78214	8	3/8-16 x 1" FHSCS Black				
54	78215	2	#10-32 w/lock washer Nut				
55	78216	7	#10-32 x 3/8" BHSCS Black				
56	78217	2	1/2" Rue Ring				
57	78220	1	1/8" x 7/16" Roll Pin				
58	78221	1	1/8" x 1" Roll Pin				

2008 CHRYSLER TRANSFER SEAT BASE ASSEMBLIES LIST

(Refer to parts list on page 2D and illustration on page 2F)

REF NO.	ASSEMBLY NO.	DESCRIPTION	QTY.
1	78135A	Motor Mount Swivel Assembly includes (1) Ref. No. 6, (3) Ref. No. 7, (1) Ref. No. 46 & (3) Ref. No. 47	1
2	78139A	Motor Mount Slide Assembly includes (1) Ref. No. 8, (3) Ref. No. 47 & (1) Ref. No. 48	1
3	78143A	Drive Swivel Slide Assembly includes (1) P/N 78135A, (1) P/N 78139A, (2) Ref. No. 9, (1) Ref. No. 10, (2) Ref. No. 11 & (4) Ref. No. 40	1
4	78151A	Chrysler Top Plate Assembly '07 & '08 includes (1) Ref. No. 12, (1) Ref. No. 13, (1) Ref. No. 14, (2) Ref. No. 15, (1) Ref. No. 19 (2) Ref. No. 49, (4) Ref. No. 50, (2) Ref. No. 54, (2) Ref. No. 55 & (2) Ref. No. 83	1
5	78155A	Lift Arm Assembly includes (1) Ref. No. 16 (4) Ref. No. 18 & (4) Ref. No. 51	2
6	78162A	Chrysler Lift Assembly '07& '08 includes (1) P/N 78151A, (2) P/N 78155A, (1) Ref. No. 17, (1) Ref. No. 52, (8) Ref. No. 53, (2) Ref. No. 56, (1) Ref. No. 85 & (1) Ref. No. 86	1
7	78167A	Stop Pin/Solenoid Assembly Includes (1) Ref. No. 20, (1) Ref. No. 21 (1) Ref. No. 22, (1) Ref. No. 23, (1) Ref. No. 57, (1) Ref. No. 58, (1) Ref. No. 59, (1) Ref. No. 60 & (1) Ref. No. 61	1
	78259A/78265A 78262A	Hand Switch Assembly Medium Slate (Gray) / Pebble (Tan) '08 Hand Switch Assembly Dark Slate (Almost Black) '08 includes (1) Ref. No. 36, (1) Ref. No. 79, (4) Ref. No. 80	1
8	78310A	Chrysler Pan Assembly '07 & '08 includes (1) Ref. No. 1, (1) Ref. No. 2, (2) Ref. No.3, (1) Ref. No. 4, (1) Ref. No. 5, (2) Ref. No. 34, (4) Ref. No. 39, (8) Ref. No. 40, (6) Ref. No. 41, (2) Ref. No. 42, (4) Ref. No. 43, (4) Ref. No. 44, (2) Ref. No. 45, (14) Ref. No. 76, (14) Ref. No. 87, (1) Ref. No. 89, (1) Ref. No. 90 & (1) Ref. No. 91	1
9	78315A	Chrysler Slide Carriage Assembly '08 Includes (1) P/N 78143A, (1) P/N 78162A, (1) P/N 78167A, (1) Ref. No. 24, (1) Ref. No. 25, (1) Ref. No. 26, (1) Ref. No. 27, (2) Ref. No. 28, (1) Ref. No. 29, (1) Ref. No. 30, (1) Ref. No. 31, (1) Ref. No. 32, (1) Ref. No. 33, (2) Ref. No. 40, (4) Ref. No. 50, (5) Ref. No. 55, (1) Ref. No. 62, (1) Ref. No. 63, (1) Ref. No. 64, (1) Ref. No. 66, (1) Ref. No. 67, (2) Ref. No. 68, (2) Ref. No. 69, (1) Ref. No. 70, (3) Ref. No. 71, (9) Ref. No. 72, (1) Ref. No. 73, (1) Ref. No. 74, (1) Ref. No. 92 & (1) Ref. No. 93	1
	78318A	Chrysler Complete Transfer Seat Base Assembly '08 Includes (1) P/N 78310A, (1) P/N 78315A, (1) Ref. No. 35, (1) Ref. No. 37, (1) Ref. No. 38, (1) Ref. No. 65, (14) Ref. No. 76, (1) Ref. No. 77, (1) Ref. No. 78, (1) Ref. No. 81, (1) Ref. No. 82, (4) Ref. No. 84, (1) Ref. No. 88, (1) Ref. No. 94, (1) Ref. No. 95, (3) Ref. No. 96, (4) Ref. No. 97, (3) Ref. No. 98 & (1) Ref. No. 99	1



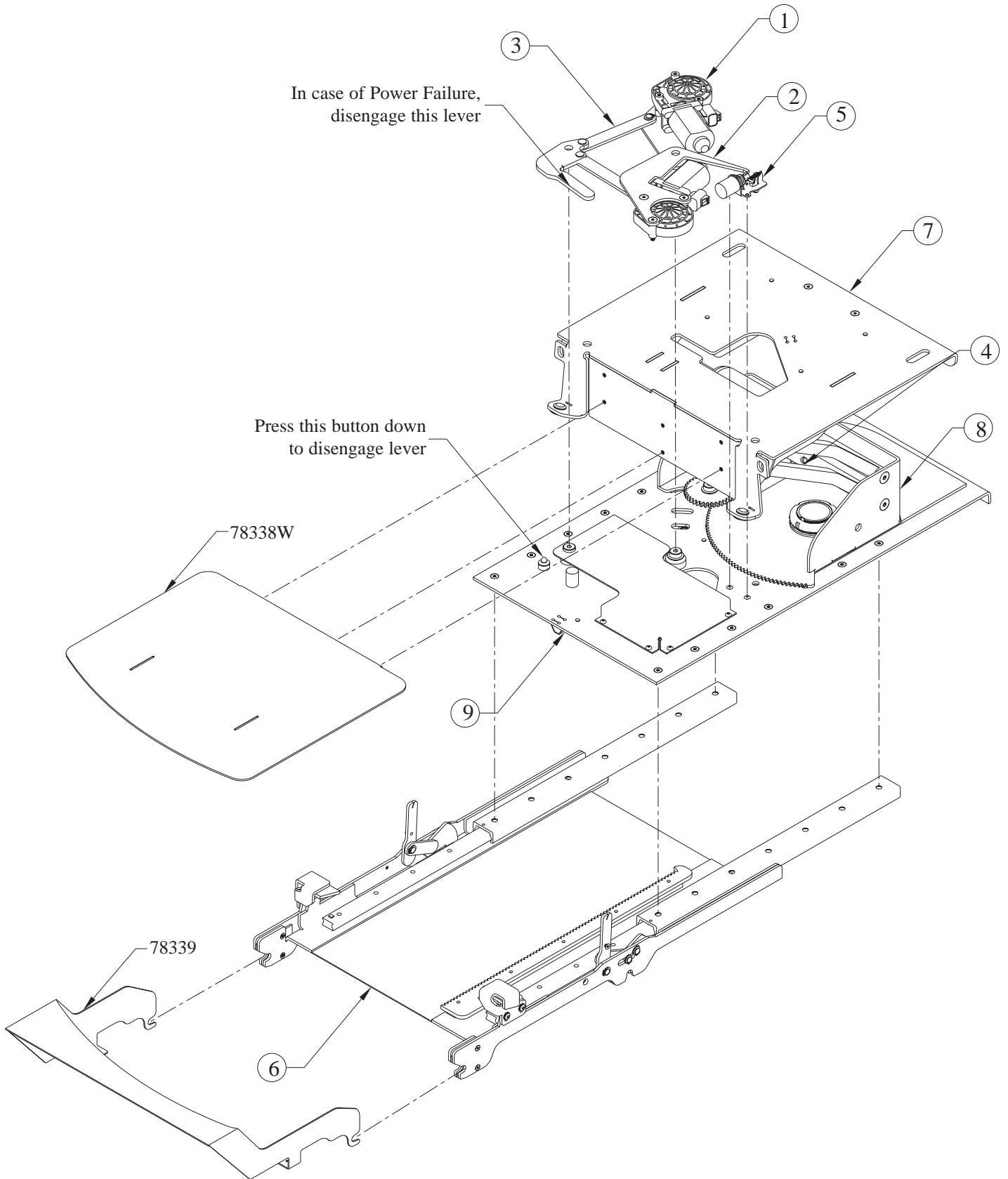
REPLACEMENT PARTS LIST FOR 2008 TOYOTA

REF NO.	PART NO.	QTY.	DESCRIPTION	REF NO.	PART NO.	QTY.	DESCRIPTION
1	78114DW	1	Handle Striker Lock Wmt - Driver	59	78224A	1	Pull Solenoid Assembly
2	78115PW	1	Handle Striker Lock Wmt - Passenger	60	78225	1	3" x 2.2" x 1/8" Thrust Bearing
3	78118W	2	Link Striker Lock Weldment	61	78226	1	2.157" Washer
4	78119	1	Gear Rack Spacer	62	78227	1	2.157-18 Nut
5	78120	1	Gear Rack	63	78227SWT	1	Spanner Wrench Tool
6	78130W	1	Slide Carriage Weldment	64	78228	1	3:1 Reduction Gear Assembly
7	78133W	1	Motor Mount Swivel Weldment	65	78229	1	Spring Plunger
8	78134	3	Motor Mount Spacer	66	78230	2	0.515 x 1" Belleville Spring Washer
9	78138W	1	Motor Mount Side Weldment	67	78231	2	1/2" x 3/4" x 3/8-16 Shoulder Bolt
10	78140	2	Link Motor Mount Handle	68	78232	1	1/2" x 7/8" x 3/8-16 Shoulder Bolt
11	78141	1	Swivel/Slide disengage Handle	69	78233	3	3/8-16 Nut - Auto Black
12	78142	2	Handle Pin	70	78234	9	3/16" Pop Rivet - Auto Black
13	78148	1	UHMW Down Bumper	71	78235	1	1/2" Snap Ring - Auto Black
14	78149	1	Harness Shield	72	78236	1	.516" x .75" x .025 Washer - Black
15	78150	2	UHMW Flat Black Bearing	73	78237	14	M6 x 1.0 x 0.8 mm FHSCS G 10.9
16	78154W	2	Lift Arm Weldment	74	78238	14	M8 x 1.25 x 1.6 mm FHSCS G 10.9
17	78159W	1	Bottom Plate/Swivel Gear Weldment	75	*78251S	1	Foot Rest Plastic - Stone '08
18	78160	4	Lift Arm Pivot Shaft		*78254F	1	Foot Rest Plastic - Fawn '08
19	78161A	1	Lift Assembly/Relay Harness	76	*78252S	1	Main Ass'y Plastic - Stone '08
20	78163	1	Stop Solenoid Pin		*78255F	1	Main Ass'y Plastic - Fawn '08
21	78164	1	Stop Pin/Solenoid Link	77	*78253S	1	Hand Switch Plastic - Stone '08
22	78165	1	Stop Pin Solenoid Bracket		*78256F	1	Hand Switch Plastic - Fawn '08
23	78166	1	Stop Pin Link Stop	78	78245	4	Black Plastic Snap Rivets
24	78168	1	UHMW Swivel Bearing	79	78246	1	1" x 40" Velcro Hook - Rough Side
25	78169	1	Main Swivel Pivot	80	78247	1	1" x 40" Velcro Hook - Soft Side
26	78170	1	Motor Slide/Swivel Cover	81	78266	2	Wiring Harness Relay
27	78171	1	Slide Carriage Harness Shield	82	78271	4	1/4-28 x 1/2" BHCS Bolt
28	78172	2	Slide Carriage Roller	83	78272	1	1/2" x 2 1/4" Clevis Pin
29	78173	1	Roller Shaft Pin	84	78273	1	1/2" x 2 3/4" Clevis Pin
30	78174	1	3:1 Gear Reduction Spacer	85	78275	14	7" Black Cable Ties
31	78175	1	Motor Mount Spacer	86	78276	1	5/8" Insulated Wire Clamp
32	78176	1	Handle Spacer	87	78316W	1	Anti-Rattle Stop - Driver Side
33	78177A	1	Main Power Harness	88	78317W	1	Anti-Rattle Stop - Passenger Side
34	78184	2	Linear Slide Bearing Rail	89	783325W	1	Toyota Pan Weldment '08
35	78186A	1	Pigtail Wiring Harness	90	78327DW	1	Striker Hook Weldment - Driver
36	78187A	1	Lift Arm & Relay Block Harness	91	78328PW	1	Striker Hook Weldment - Passenger
37	78200	4	Washer - .376 x .563 18-8 Stainless	92	78331W	1	Toyota Riser Top Weldment '08
38	78201	14	1/2" Snap Ring - Auto Black	93	78334A	1	Driver Seat w/o Memory Harness '08
39	78202	6	1/4-20 x 3/4" FHCS 18-8 Stainless	94	78338W	1	Foot Rest Weldment '08 Toyota
40	78203	2	Anti Rattle/Front Seat	95	78339	1	Foot Rest Pan '08 Toyota
41	78204	4	#10-32 x 1/2" FHDXS	96	80003-000	3	1/4-20 x 1/2" HCS Bolt
42	78205	4	#10-32 x 0.20 Cable Retainer Nut	97	82034-000	4	1/4" External Tooth Lock Washer
43	78206	2	#10-32 x 3/8" FL HD-HX SKT Screw	98	88017-000	3	Screw-#8-18 x 3/4" Phillips Pan Head
44	78207	1	Left Siemans Motor - Tapped	99	92063-000	1	Decal - Warning This Vehicle Kit
45	78208	6	1/4-20 x 1 1/2" FHSCS				
46	78209	1	Right Siemans Motor - Tapped		*NOTE: Stone = Gray		
47	78210	2	1/4-20 x 3/4" FHSCS		Fawn = Tan		
48	78211	8	Pop Rivet 3/16" Auto Black				
49	78212	8	1/2" x 1/2" Flange Bearing				
50	78213	1	1,000 lbs. Actuator				
51	78214	8	3/8-16 x 1" FHSCS Black				
52	78215	2	#10-32 w/lock washer Nut				
53	78216	7	#10-32 x 3/8" BHSCS Black				
54	78217	2	1/2" Rue Ring				
55	78220	1	1/8" x 7/16" Roll Pin				
56	78221	1	1/8" x 1" Roll Pin				
57	78222	1	3/16" x 1" Extension Spring				
58	78223	1	1/8" Rivet Stainless Steel				

2008 TOYOTA TRANSFER SEAT BASE ASSEMBLIES LIST

(Refer to parts list on page 3A and illustration on page 3C)

REF NO.	ASSEMBLY NO.	DESCRIPTION	QTY.
1	78135A	Motor Mount Swivel Assembly includes (1) Ref. No. 7, (3) Ref. No. 8, (1) Ref. No. 44 & (3) Ref. No. 45	1
2	78139A	Motor Mount Slide Assembly includes (1) Ref. No. 9, (3) Ref. No. 45 & (1) Ref. No. 46	1
3	78143A	Drive Swivel Slide Assembly includes (1) P/N 78135A, (1) P/N 78139A, (2) Ref. No. 10, (1) Ref. No. 11, (2) Ref. No. 12 & (4) Ref. No. 38	1
4	78155A	Lift Arm Assembly includes (1) Ref. No. 16 (4) Ref. No. 18 & (4) Ref. No. 49	2
5	78167A	Stop Pin/Solenoid Assembly Includes (1) Ref. No. 20, (1) Ref. No. 21 (1) Ref. No. 22, (1) Ref. No. 23, (1) Ref. No. 55, (1) Ref. No. 56, (1) Ref. No. 57, (1) Ref. No. 58 & (1) Ref. No. 59	1
	78253A/78256A	Hand Switch Assembly Stone (Gray) / Fawn (Tan) '08 includes (1) Ref. No. 36, (1) Ref. No. 77, (4) Ref. No. 78	1
6	78329A	Toyota Pan Assembly '08 includes (1) Ref. No. 1, (1) Ref. No. 2, (2) Ref. No.3, (1) Ref. No. 4, (1) Ref. No. 5, (2) Ref. No. 34, (4) Ref. No. 37, (8) Ref. No. 38, (6) Ref. No. 39, (2) Ref. No. 40, (4) Ref. No. 41, (4) Ref. No. 42, (2) Ref. No. 43, (14) Ref. No. 74, (14) Ref. No. 85, (1) Ref. No. 89, (1) Ref. No. 90 & (1) Ref. No. 91	1
7	78332A	Toyota Top Plate Assembly '08 includes (1) Ref. No. 13, (1) Ref. No. 14, (2) Ref. No. 15, (1) Ref. No. 19, (2) Ref. No. 47 (4) Ref. No. 48, (2) Ref. No. 52, (2) Ref. No. 53, (2) Ref. No. 81 & (1) Ref. No. 92	1
8	78333A	Toyota Lift Assembly '08 includes (2) P/N 78155A, (1) P/N 78332A, (1) Ref. No. 17, (1) Ref. No. 50, (8) Ref. No. 51, (2) Ref. No. 54, (1) Ref. No. 83 & (1) Ref. No. 84	1
9	78335A	Toyota Slide Carriage Assembly '08 Includes (1) P/N 78143A, (1) P/N 78167A, (1) P/N 78333A, (1) Ref. No. 6, (1) Ref. No. 24, (1) Ref. No. 25, (1) Ref. No. 26, (1) Ref. No. 27, (2) Ref. No. 28, (1) Ref. No. 29, (1) Ref. No. 30, (1) Ref. No. 31, (1) Ref. No. 32, (1) Ref. No. 33, (2) Ref. No. 38, (4) Ref. No. 48, (5) Ref. No. 53, (1) Ref. No. 60, (1) Ref. No. 61, (1) Ref. No. 62, (1) Ref. No. 64, (1) Ref. No. 65, (2) Ref. No. 66, (2) Ref. No. 67, (1) Ref. No. 68, (3) Ref. No. 69, (9) Ref. No. 70, (1) Ref. No. 71, (1) Ref. No. 72 & (1) Ref. No. 93	1
	78340A	Toyota Complete Transfer Seat Base Assembly '08 Includes (1) P/N 78310A, (1) P/N 78335A, (1) Ref. No. 35, (1) Ref. No. 63, (14) Ref. No. 73, (1) Ref. No. 75, (1) Ref. No. 76, (1) Ref. No. 79, (1) Ref. No. 80, (4) Ref. No. 82, (1) Ref. No. 86, (1) Ref. No. 87, (1) Ref. No. 88, (1) Ref. No. 94, (1) Ref. No. 95, (3) Ref. No. 96, (4) Ref. No. 97, (3) Ref. No. 98 & (1) Ref. No. 99	1



SHIPMENT INFORMATION

Because of the specialized nature of this product, Mobility Products & Design does not sell directly to the end user. Instead the product is distributed the world wide network of authorized Mobility Products & Design dealers, who perform sales and installation.

When the product is received, unpack the product and check for freight damage. Claims for any damages should be made to the freight carrier immediately.

Be sure the kit contains all items listed on the packing slip. Please report any missing items immediately to Mobility Products & Design Customer Service. The warranty and owner registration cards must be completed and returned to Mobility Products & Design within 30 days to valid the warranty.

NOTE: The Sales/Service Personnel must review the Warranty and this Service Manual with the user to be certain that they understand the safe operation of the product. Instruct the user to follow the operating instructions without exception.



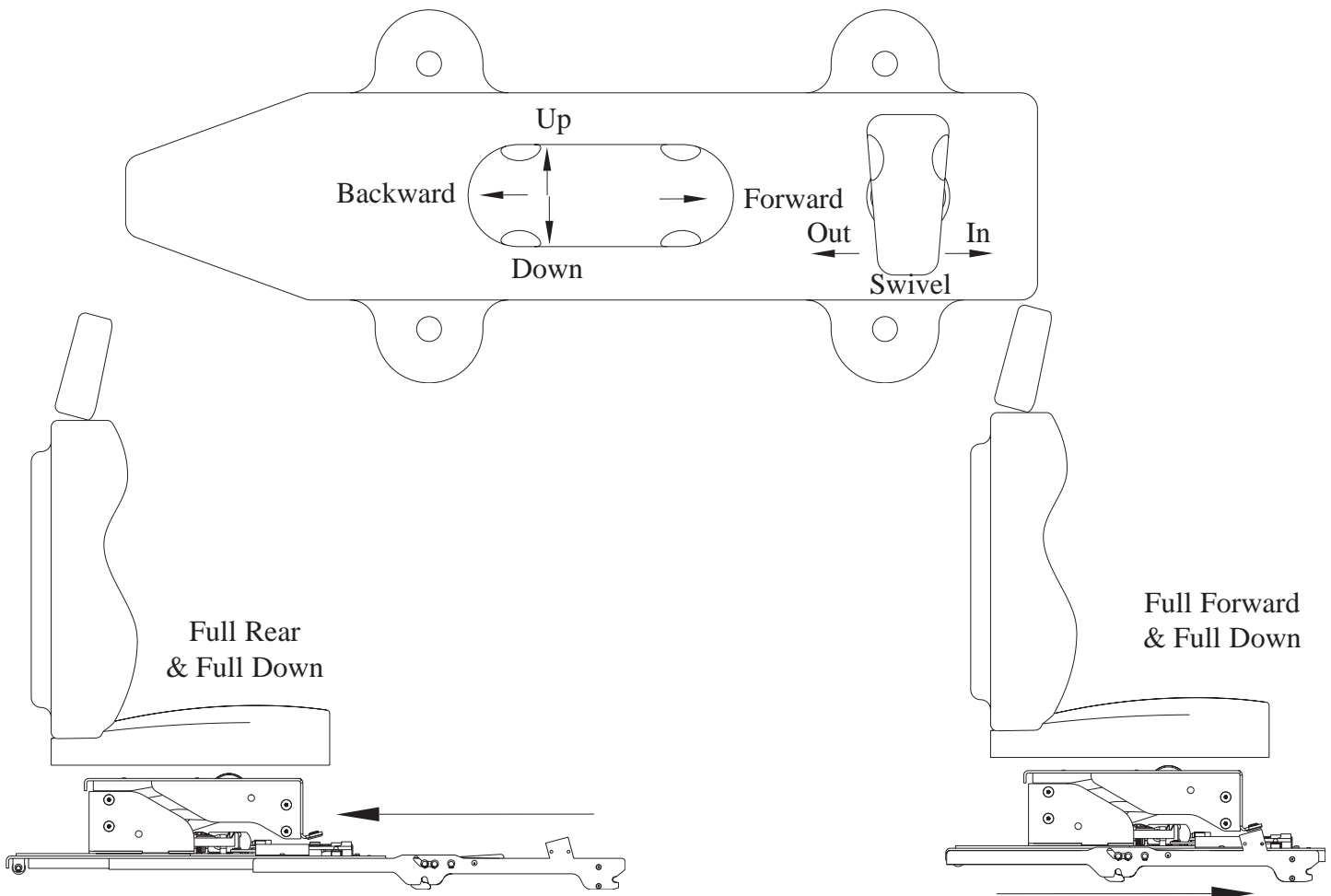
WARNING: THIS PRODUCT HAS BEEN DESIGNED AND MANUFACTURED TO EXACT SPECIFICATIONS. MODIFICATION OF THIS PRODUCT IN ANY RESPECT CAN BE DANGEROUS.

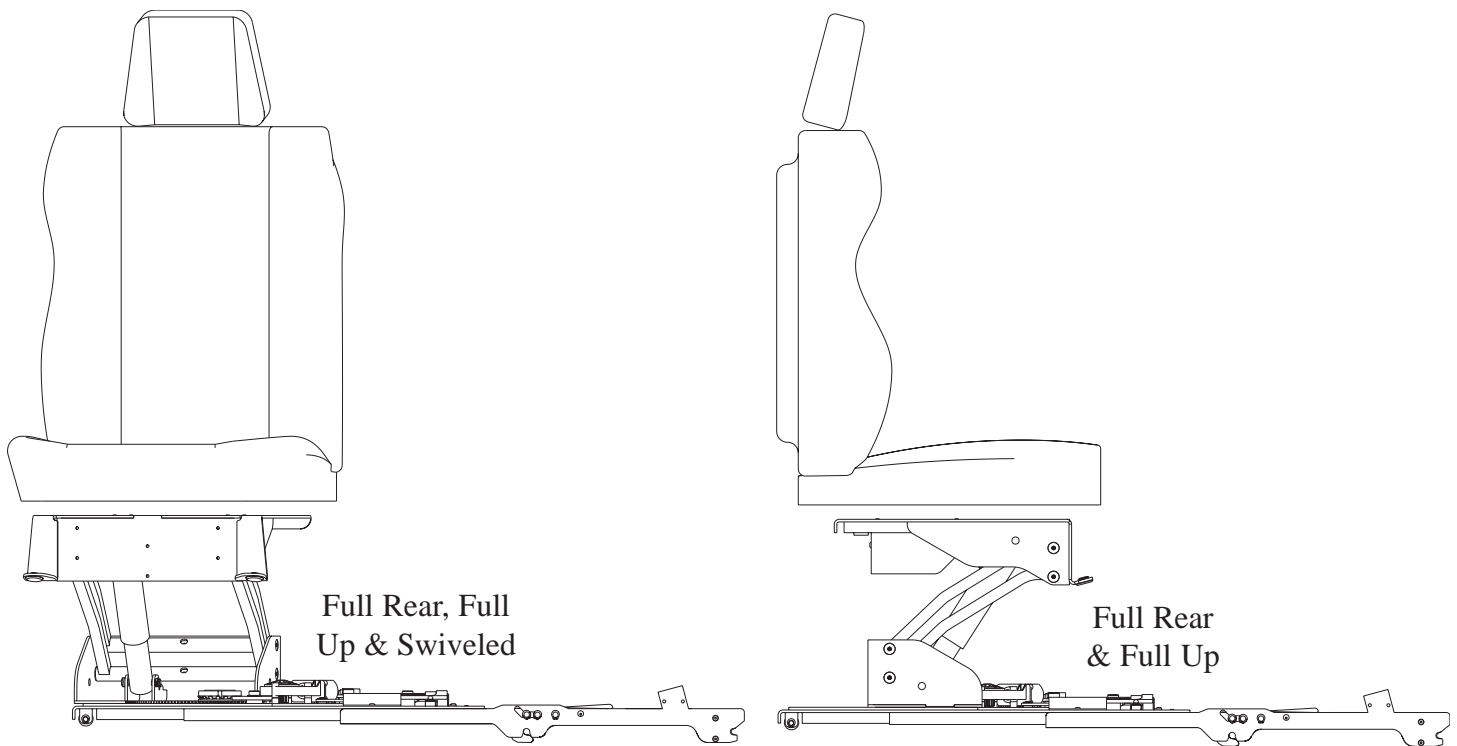
This Warranty is void if:

The product has been installed or maintained by someone other than an authorized Mobility Products & Design service technician.

The product has been modified or altered in any respect from its original design without written authorization of Mobility Products & Design.

POWER SEAT BASE FUNCTIONS





TRANSFERRING FROM WHEELCHAIR TO SEAT

With seat in the docking position. Press and hold reverse button on transfer seat base until it is full back. Then run the OEM seat full forward. This will allow missing the B-Pillar and any switches that may be in the way. NOTE: (Passenger seat may have to move forward to allow full swivel.) Now swivel to desired location for transfer. Set OEM seat/transfer seat base slightly lower than the wheelchair. Lock wheelchair brakes, and transfer to OEM seat. Rotate transfer seat base back to facing the drivers wheel. Be sure that the transfer seat base is in its full down positions before moving forward to docking position. Adjust OEM seat for driver then put seat belt on

TRANSFERRING FROM SEAT TO WHEELCHAIR

With seat in the docking position. Press and hold reverse button on transfer seat base until it is full back. Then run the OEM seat full forward. This will allow missing the B-Pillar and any switches that may be in the way. NOTE: (Passenger seat may have to move forward to allow full swivel.) Now swivel to desired location for transfer. Set OEM seat/transfer seat base slightly higher than the wheelchair. Be sure wheelchair brakes are on before transferring.

MAINTENANCE AND TROUBLESHOOTING

Regular maintenance of the Mobility Products & Design 6-Way Transfer Seat Base will provide optimum performance and reduce the need for repairs. Mobility Products & Design products are highly specialized and maintenance must be performed by an authorized Mobility Products & Design service technician using Mobility Products & Design replacement parts. Maintenance inspections should be done at least every six months.

MAINTENANCE SCHEDULE

TABLE 1-1: SIX MONTH SAFETY CHECK	
SERVICE POINT	ACTION TO PER FORM
Pivot point and faster tightness.	Tighten, as necessary
Upper frame and base frame assembly inside rail lubrication.	Apply light oil, as necessary
Scissor actuator assembly (Up/Down) lubrication.	Apply light oil, as necessary
Electrical harness routing.	Adjust, as necessary
Swivel plate bronze bearing wear	Replace, as necessary
Rack gear assembly wear.	Replace, as necessary
END OF TABLE	

TROUBLESHOOTING GUIDE

For troubleshooting the transfer seat base, refer to **Table 1-2**. The troubleshooting guide is intended to provide a logical starting point for general lifting problems. However, not all possible problems or combinations of problems, are listed. The guide requires that the vehicle battery is fully charged and the battery connections are clean and tight.



WARNING: THE TROUBLESHOOTING GUIDE DOES NOT INCORPORATE ROUTINE SAFETY PRECAUTIONS OR PRELIMINARY PROCEDURES. AUTHORIZED MOBILITY PRODUCTS & DESIGN SERVICE TECHNICIANS SHOULD PERFORM TROUBLESHOOTING.

TABLE 1-2: TROUBLESHOOTING GUIDE					
SYMPTOM		POSSIBLE CAUSE		REMEDY	
NO OPERATION	No electrical power to Transfer Seat Base	Main circuit breaker tripped.	Reset circuit breaker.	Blown Fuse.	Replace fuse.
		RED wire in electrical harness shorted to vehicle frame.	Investigate reason for short or breakage and repair wire or replace harness.	RED wire in electrical harness broken/open.	
		Circuit breaker defective.	Replace circuit breaker.	Poor ground connection at base frame.	Clean and tighten connection or repair.
		Broken common wire electrical connector.	Repair connector.		
NO UP OR DOWN	Partial motion	Obstruction in base frame rails. Check electrical power.	Remove obstruction and check for damages.		
	No motion	Broken electrical connector “Up/Down” toggle switch.	Repair connector.		
		Broken electrical connector “Up/Down” toggle switch.	Replace toggle switch.	Scissor actuator assembly defective.	Replace scissor actuator assembly .
NO FORWARD OR REVERSE	Partial motion	Obstruction in base frame rails.	Remove obstruction and check for any damages.	Rack gear assembly jammed.	
	No motion	Broken electrical connector “Forward/Reverse” toggle switch.	Repair connector.		
		Toggle switch defective.	Replace toggle switch.	Horizontal motor defective.	Replace motor.
NO SWIVEL RIGHT OR LEFT	Partial motion	Contact between seats and wall or seat belt/shoulder harness wrapped.	Make sure seat-back is not reclined or clear seat belt/shoulder harness.		
	No motion	Broken electrical connector “Swivel Right/Left” toggle switch.	Repair connector.		
		Toggle switch defective.	Replace toggle switch.	Swivel motor defective.	Replace motor.
END OF TABLE					

MOBILITY PRODUCTS & DESIGN WARRANTY POLICY

Mobility Products & Design warrants the products it manufactures to be free from defects in material and workmanship for a period of two (2) years from the date of the original customer's purchase. All warning messages must be adhered to strictly, and regular maintenance procedures must be followed.

This Warranty is effective only if the products or parts of the product have been installed in accordance with Mobility Products & Design's written recommendations and with established installation practices and by an authorized dealer of Mobility Products & Design. Mobility Products & Design does not assume liability for defective products not manufactured or supplied by it, even though some products are used in conjunction with Mobility Products & Design products. Any and all claims for Warranty adjustments must be originated within the twenty-four (24) month Warranty period and must be submitted by an authorized Mobility Products & Design dealer in accordance with established Mobility Products & Design Warranty Claim procedures. The properly completed Warranty Registration (if supplied with the product) must be on file at the office of Mobility Products & Design for any Warranty claim to be considered. The Warranty period begins upon installation of the product or the date the product is placed in service.

If, within such a Warranty period, any part of the product shall be proved to Mobility Products & Design's satisfaction to be defective, such part shall be repaired or replaced at Mobility Products & Design's option. Mobility Products & Design's sole obligation and the customer's exclusive remedy, hereunder, shall be limited to such part repair or replacement.

Service under this Warranty is available from the authorized Mobility Products & Design dealer who installed the equipment. If such dealer is not available, you may call (800) 488-7688 for the name of another servicing dealer or visit our website www.mobilityproductsdesign.com and click on Dealer Locator.

NO RETURNS WILL BE ACCEPTED WITHOUT FIRST OBTAINING A WARRANTY RETURN AUTHORIZATION NUMBER FROM MOBILITY PRODUCTS & DESIGN SHIPMENTS SENT IN FREIGHT COLLECT OR C.O.D. WILL BE REFUSED, UNLESS PREVIOUSLY AUTHORIZED.

Mobility Products & Design reserves the right to inspect any product or part which is subject of a Warranty claim in order to make final determination of the validity of such claim. Damage due to misuse, improper maintenance, improper installation, or damage from mishap or collision, is not covered.

In any event, Mobility Products & Design's liability extends only to the repair or replacement of such components as are necessary to restore the product to normal operating condition. All other claims or liabilities are expressly denied.

This Warranty states the entire liability of Mobility Products & Design with respect to the products it manufactures. It is exclusive; and in lieu of all warranties expressed or implied, including but not limited to implied warranties of merchantability and fitness for particular use unless applicable by law, and then shall not extend beyond the minimum law or the duration of the express Warranty whichever is less. Under no circumstances will Mobility Products & Design be responsible for incidental or consequential damage arising out of the use of any of its products or any breach of this Warranty, and any such damages are specifically excluded from this Warranty.

Some states do not allow limitations on how long implied warranties last, so the above limitation with respect to implied warranties may not apply. Some states do not allow the exclusion or limitation of incidental, or consequential damages, so the above limitation or exclusion with respect to incidental or consequential damages may not apply.

This Warranty gives you, the customer, specific legal rights and you may have other rights which vary from state to state.

AGAIN, THE WARRANTY REGISTRATION CARD (IF SUPPLIED WITH THE PRODUCT) MUST BE COMPLETELY FILLED OUT, SIGNED AND IN POSSESSION OF MOBILITY PRODUCTS & DESIGN'S WARRANTY DEPARTMENT WITHIN THIRTY (30) DAYS AFTER INSTALLATION TO BE RECORDED AND RECOGNIZED. NO WARRANTY WILL BE AUTHORIZED UNLESS THIS IS COMPLETED.

This Warranty is to the original purchaser only and is not transferable, and applies only to vehicles with power brakes, power steering and automatic transmission. Any Mobility Products & Design product installed on vehicles without these features is strictly prohibited.

This Warranty extends only to those products that are installed or used in personal transportation vehicles. Any other use of any of the products manufactured by Mobility Products & Design other than as prescribed, are not authorized by Mobility Products & Design, and Mobility Products & Design will make no warranty with respect to such non-conforming, unauthorized use or installation. Any changes to the product by any person or dealer, will also cause the Warranty to be null and void. Any person or dealer who uses or installs any product of Mobility Products & Design for a use other than stated above, does so at their own risk with the full knowledge and understanding that the Warranty is null and void. Any use other than in personal transportation vehicles for handicapped persons, unless agreed to and approved in writing by the company shall render the Warranty null and void.

This Warranty will not apply if the product is used or submitted in contests or testing programs. Your vehicle must conform to all Federal Motor Vehicle Safety Standards (FMVSS) for the Warranty to be valid.

